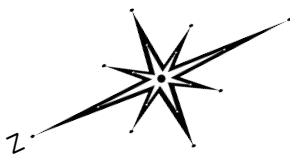
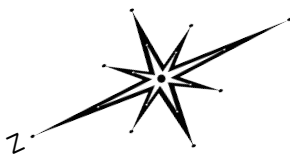
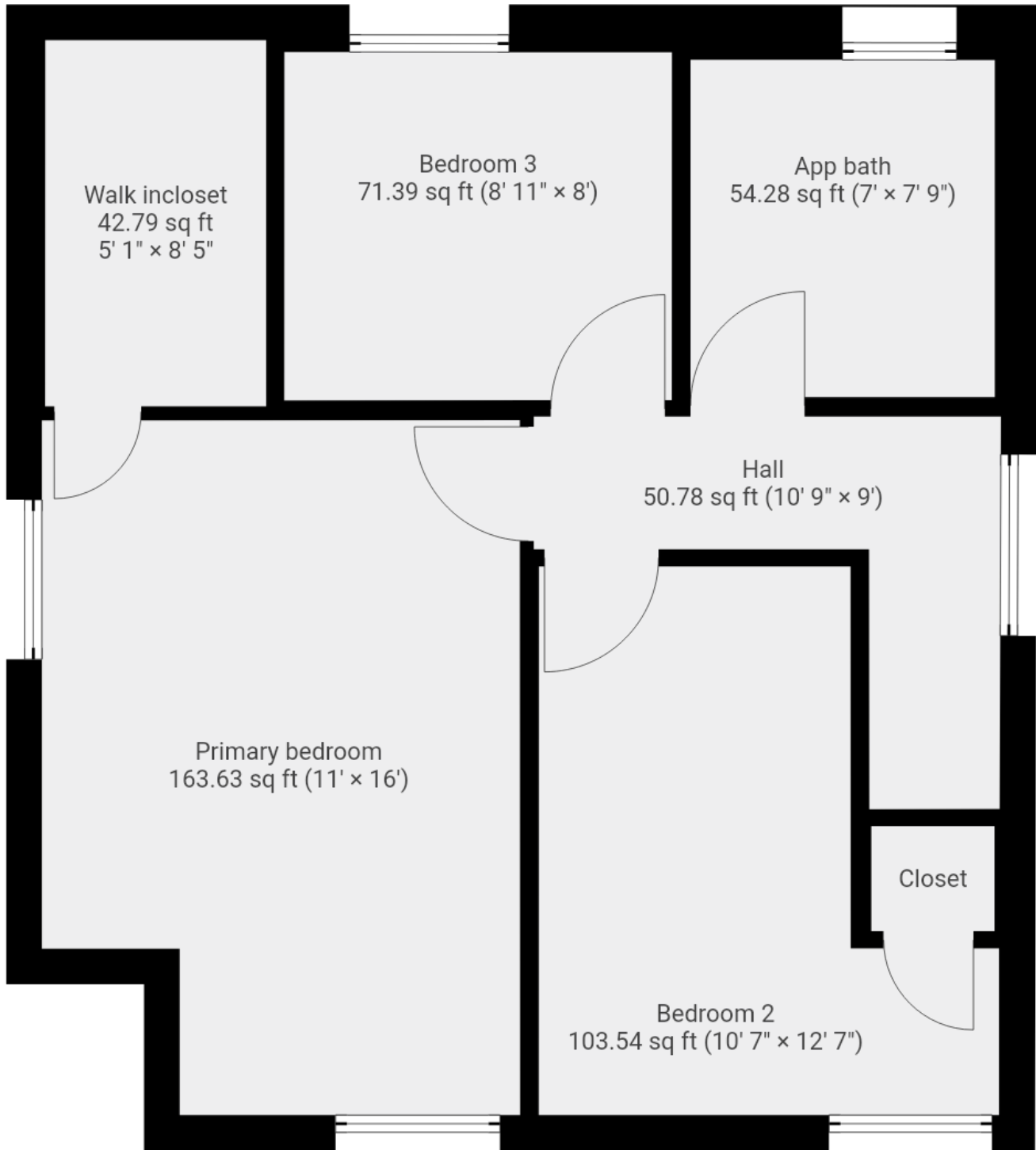


Ground Floor
(above grade)

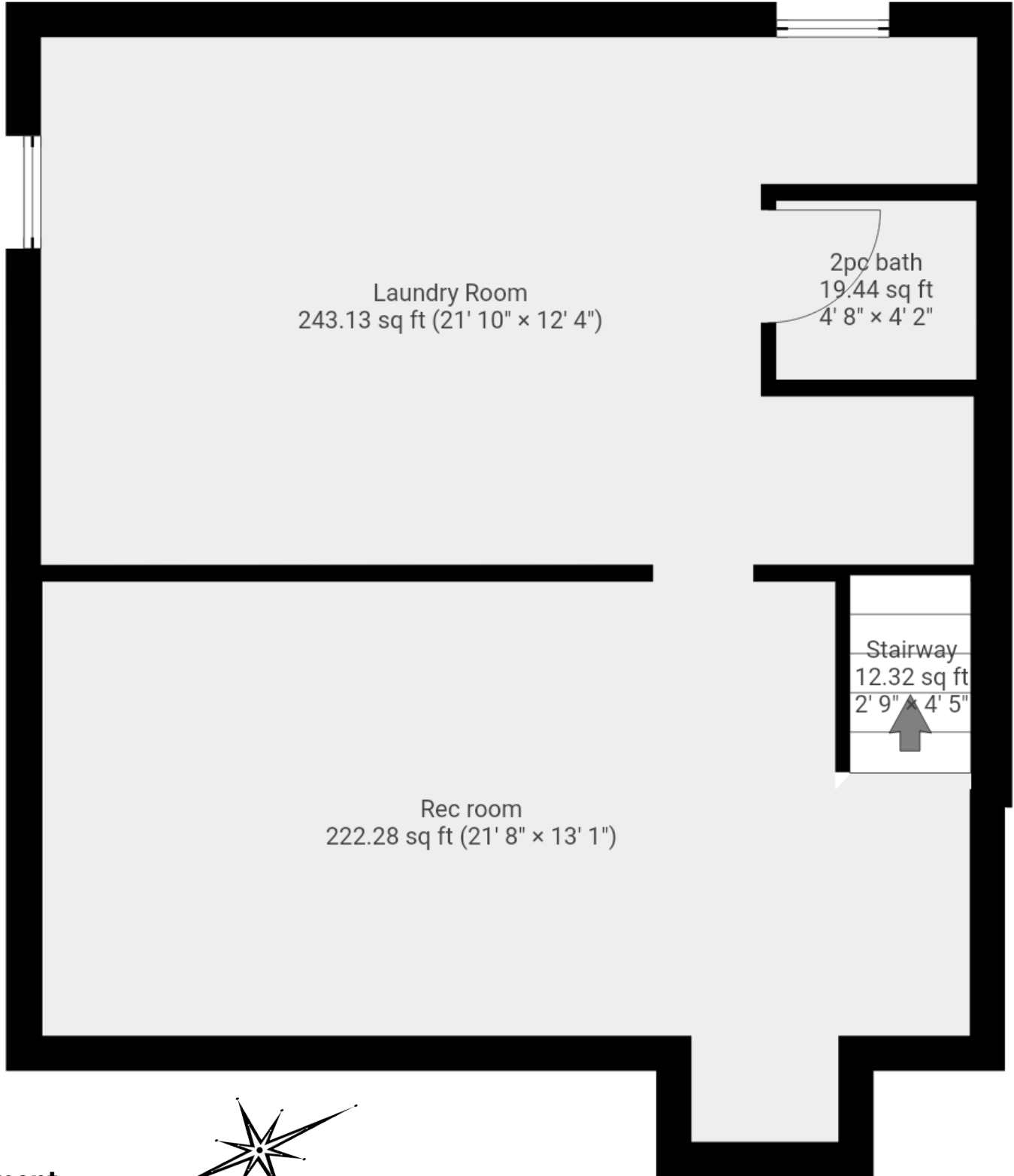


Approx Interior Area = 683 ft²
Approx Exterior Area = 778 ft²



Second Floor
(above grade)

Approx Interior Area = 524 ft²
Approx Exterior Area = 604 ft²



Basement
(below grade)

Approx Interior Area = 514 ft²
Approx Exterior Area = 595 ft²

All room dimensions and floor areas must be considered approximate and are subject to independent verification.



Summary

Main Room Interior Measurements

Imperial Metric

Ground Floor (above grade) - Approx Exterior ft² = 778 ft²

Living Room	14'6 x 12'9	4.42m x 3.89m
Dining Room	12'9 x 10'2	3.89m x 3.10m
Kitchen	9'1 x 11'8	2.77m x 3.56m
Family Room	9'7 x 16'11	2.92m x 5.16m

Second Floor (above grade) - Approx Exterior ft² = 604 ft²

Primary Bedroom	11'0 x 16'0	3.35m x 4.88m
Walk in Closet	5'1 x 8'5	1.55m x 2.57m
Bedroom 2	10'7 x 12'7	3.23m x 3.84m
Bedroom 3	8'11 x 8'0	2.72m x 2.44m
4pc Bath	7'0 x 7'9	2.13m x 2.36m

Basement (below grade) - Approx Exterior ft² = 595 ft²

Rec Room	21'8 x 13'1	6.60m x 3.96m
Laundry/Utility	21'10 x 12'4	6.65m x 3.76m
2pc Bath	4'8 x 4'2	1.42m x 1.27m

Rooms have irregular shapes and, as such, cannot be truly represented by one length and width. The length and width listed above are the longest length and width of the room. Because of this, room area is not always equal to the product of length and width but has been calculated in any floor area accurately using all wall measurements.

All room dimensions and floor areas must be considered approximate and are subject to independent verification.

